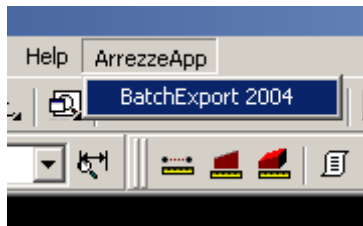




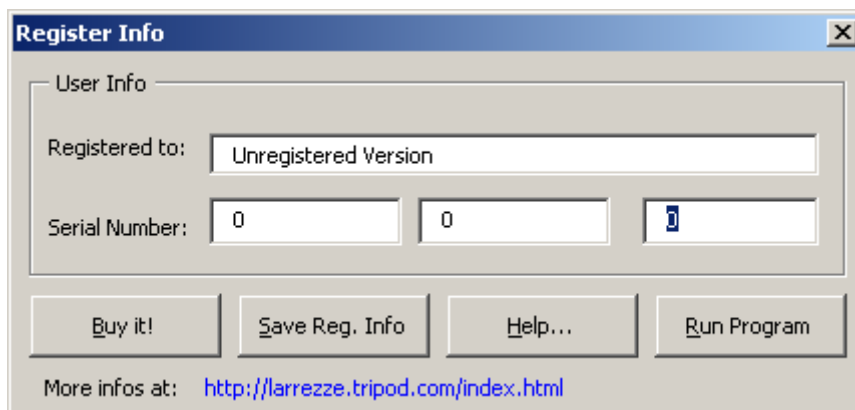
BatchExport 2004 User Guide

Please refer to the document "ReadMe.txt" to proceed the installation.

After you've installed BatchExport, AutoCAD shall incorporate a menu called "ArrezzeAPP" at the selected profiles. Click once on it, and choose "BatchExport 2004".



Doing this you start BatchExport. Unregistered versions will show the following startup dialog box:



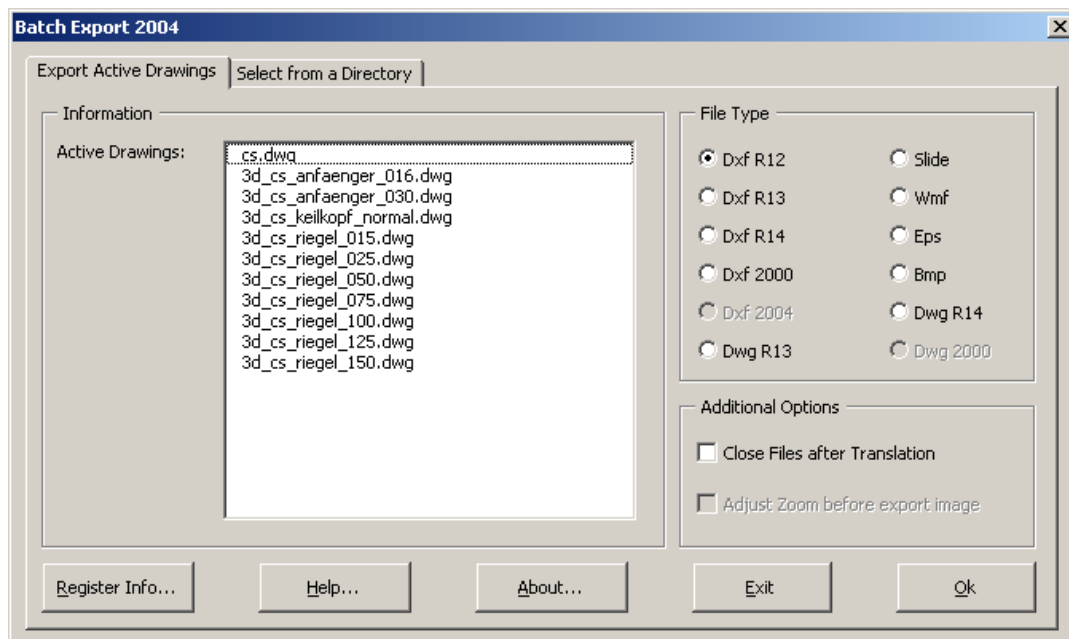
Should you like to register BatchExport 2004, press the button "Buy it!" to obtain the serial number, then fill up the correspondent fields in this form. Click in "Save Reg. Info", and as soon as the serial number has been entered correctly, you are going to be notified that the application has been successfully registered. Finally press "Run Program" to use BatchExport 2004.

To try BatchExport 2004 for free, press "Run Program" to go ahead. Please notice that unregistered versions will export only 3 drawings at once, and this restriction will disappear when you register BatchExport 2004.

Next to this dialog box comes the application's main window. You may export drawings in 2 different ways:

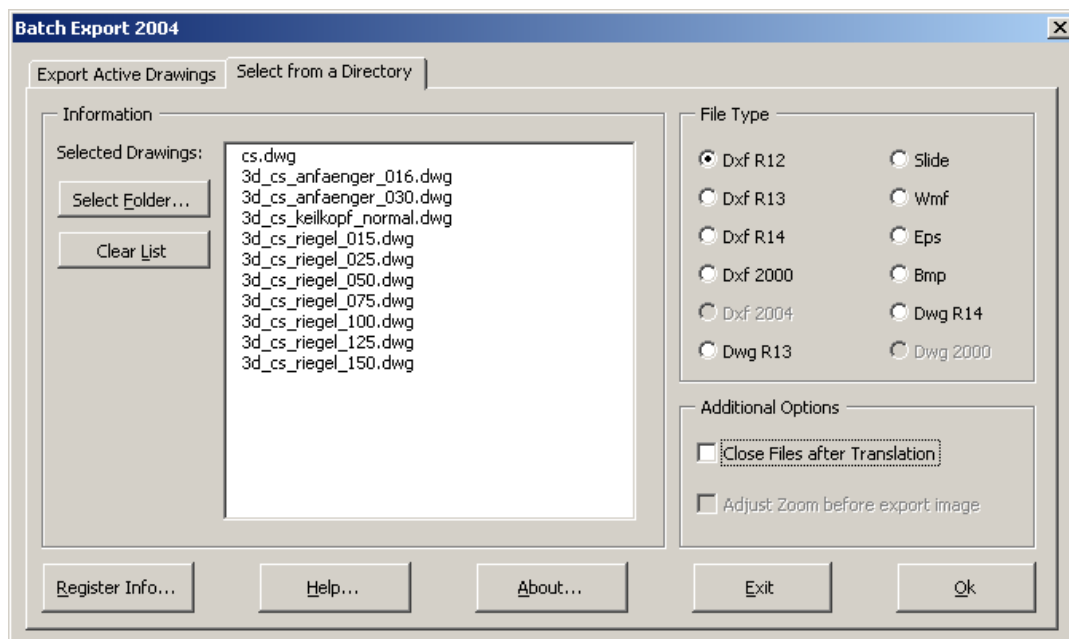
1 - Export all active drawings:

Make the tab "Export Active Drawings" active, like shown bellow, and all open drawings will be exported following the format you've chosen.



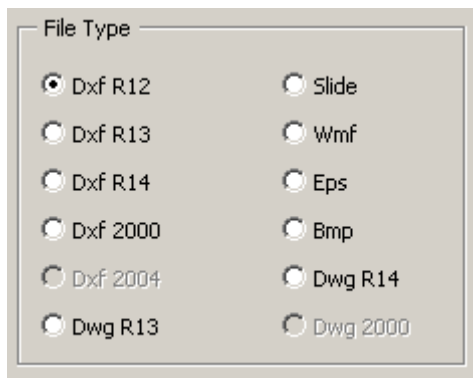
2 - Select from a Directory:

Make the tab "Select from a Directory" active, then press the button "Select Folder". Select the folder where you have all the drawings you want to export and press ok. You are going to see all of them in the drawings list, as shown bellow:



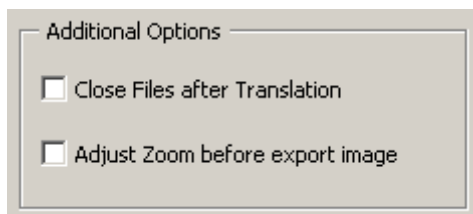
You can repeat this step as many times as you want to select multiple folders. Should you want to clear this list, press the button "Clear List".

After you have decided to export from a folder or from all open (active) drawings, you shall choose the format you want. This is made through the group "File Type", and you may choose only one format at once.



Please notice that not all the options will be enabled. This happens because BatchExport automatically recognizes your AutoCAD release and enables only the options you may use with your actual AutoCAD.

In case you want to close all the drawings after the process, mark the check box "Close Files after Translation", inside the group "Additional Options". For the file type "Slide" the check box "Adjust Zoom before export image" will be enabled. This option causes BatchExport to zoom to the drawing extends and then zoom 0.9x.

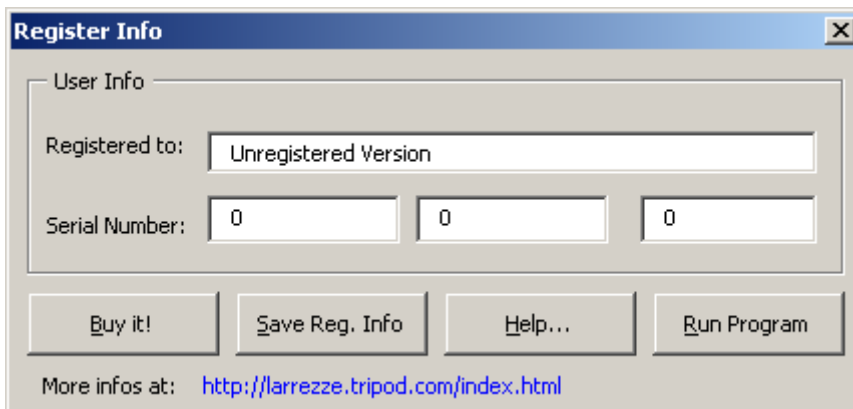


All the options made, press "Ok" and BatchExport will save the chosen files at the same folder where their parents are located. You are going to be informed that the operation has been finished.

Additional dialog boxes

1) Register Info:

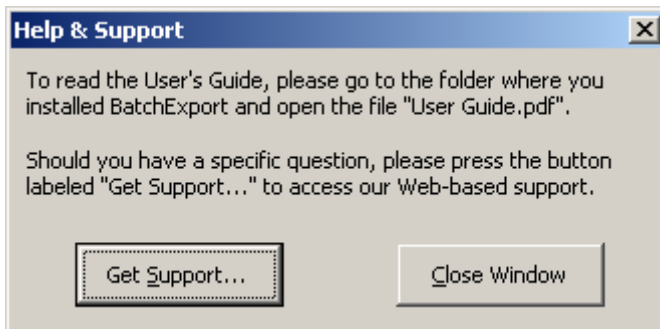
Use this dialog box to go to our website to register BatchExport (button "Buy it!"), then fill up the correspondent fields in this form. Click in "Save Reg. Info", and as soon as the serial number has been entered correctly, you are going to be notified that the application has been successfully registered.



The "Register Info" dialog box has a title bar with a close button. It contains a "User Info" section with a "Registered to:" label and a text field containing "Unregistered Version". Below this is a "Serial Number:" label followed by three separate text fields, each containing the digit "0". At the bottom, there are four buttons: "Buy it!", "Save Reg. Info", "Help...", and "Run Program". Below the buttons, it says "More infos at: <http://larrezze.tripod.com/index.html>".

2) Help and Support:

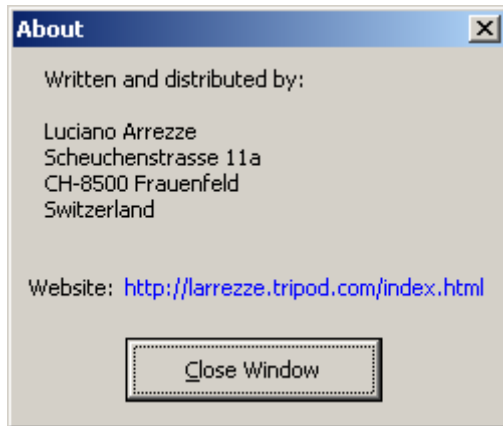
Through this dialog box you get the help file name (User Guide.pdf), and should you have a question not answered in this User Guide, press the button "Get Support..." to go to our website and contact us directly.



The "Help & Support" dialog box has a title bar with a close button. It contains two paragraphs of text. The first paragraph says: "To read the User's Guide, please go to the folder where you installed BatchExport and open the file 'User Guide.pdf'." The second paragraph says: "Should you have a specific question, please press the button labeled 'Get Support...' to access our Web-based support." At the bottom, there are two buttons: "Get Support..." and "Close Window".

3) About:

BatchExport's credits.



Copyright (C) 2003 by Luciano Arrezze. All rights reserved.
Official Website: <http://larrezze.tripod.com>

AutoCAD © Autodesk, Inc. All rights reserved.